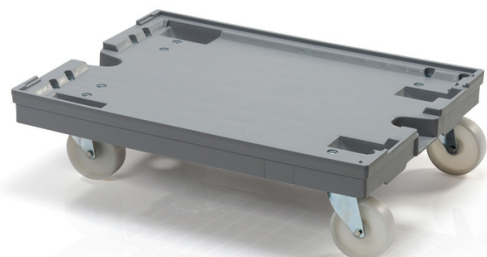


Transport trolley 80x60 2 steering + 2 fixed PP wheels with brakes



For larger loads, our 80 x 60 cm transport chassis are ideal. You can use the area for several small crates or one 80 x 60 cm euro crate. The recesses on the top allow the chassis to be stacked. High quality rubberized castors with 2 fixed and 2 steerable wheels with brakes.

Product code: 980505

Number of pieces on the pallet: 24



Technical specification

Features:

Colour	grey
Material	PP
Weight	9.8 kg
Dynamic load capacity	400 kg

Outer dimensions

Length	80 cm
Width	60 cm
Height	20 cm

Specification

2 swivel and 2 fixed 100 mm wheels with brake

The provided values are approximate and are based on practical experience and the ISO 8611 standard. These values were obtained under uniform load conditions at room temperature (20°C). Due to different usage conditions, variations in values may be observed. We recommend conducting product testing before deployment.

All technical data of the products, including dimensions and weights, are subject to changes resulting from testing conditions and production technology. No legally binding guarantees of specific properties can be inferred from the information obtained.

We reserve all rights, including the right to unforeseen errors and changes. We emphasize that the provided technical data is for informational purposes only and may be subject to changes without prior notice.